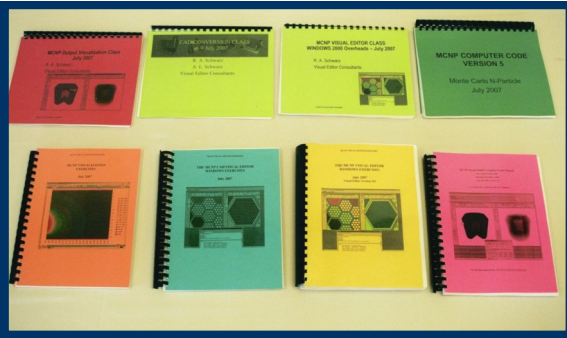


Over 1,600 pages of training materials available for on-site customized classes.



VISED is an exceptional tool for both novice and experienced users. This class offered me the opportunity to explore its full capabilities - as both a geometry generator and a visualization tool.

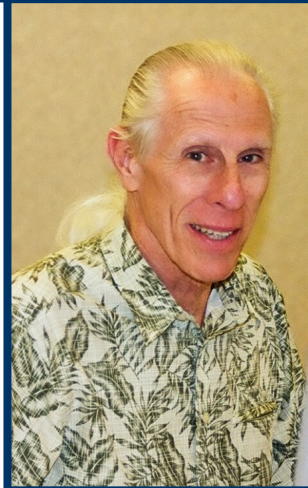


Dick Olsher - *Los Alamos National Laboratory*.
Beginning Visual Editor Class in Richland, WA - September 2006

Visual Editor Consultants
www.mcnpvised.com

Randy Schwarz, Owner
P.O. Box 1308
Richland, WA 99352
Phone: (509)539-8621
Fax: (509)946-2001
randyschwarz@mcnpvised.com

The Visual Editor provides tools for creating complex geometries rather easily and includes error checking and 2-D & 3-D visualization to assist in the interpretation. When you look at the code that is generated you can only wonder as to how it would be possible to do this otherwise and how you could ever validate that what you have is what you want or is correct.



Cyé Waldman - *Information Systems Laboratories*,
Beginning Visual Editor Class in Richland, WA - September 2007



The class was definitely very useful to me, and I would recommend it to all users and developers of MCNP.

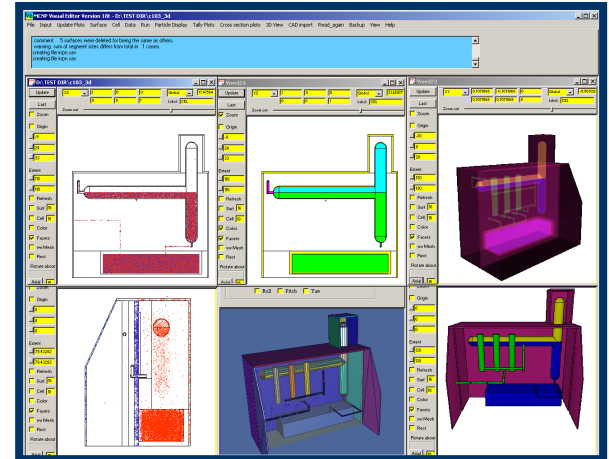
It helped produce input files for MCNP much faster and easier, and probably even more important, the visualization provided by the Visual Editor helps me understand much better the results and the physics of the simulated problem.

Stepan Mashnik- *Los Alamos National Laboratory*.
On Site Custom class, Los Alamos National Laboratory. Sept. 2008

Eliminate Travel Costs and still get the Training You Need!

Visual Editor Consultants
www.mcnpvised.com

On-Site MCNP Visual Editor Training. Bring the Visual Editor to your Location



Be in Charge of Your Training

Visual Editor Classes are approved for 32 Continuing Education credits through the American Academy of Health Physics

Randy Schwarz, Owner
Email: randyschwarz@mcnpvised.com
Tel: (509)539-8621

Bring a Visual Editor Training Class to your Location



Onsite custom class at Risley, UK, Sept. 2008

- ◆ Training is provided at your location.
- ◆ VEC will provide laptops for your use or rent a facility.
- ◆ Workshops less than 5 will use VEC laptops
- ◆ Workshops greater than 5 will be at a training facility paid by VEC.
- ◆ All travel costs will be paid by Visual Editor Consultants
- ◆ Only 3 students required to bring a Visual Editor class to your location.



Onsite custom class at LANL, Sept. 2008

- ◆ Choose which topics to be covered:
 - ◆ Full 5 day introductory course
 - ◆ 3 day Visual Editor only course.
 - ◆ 1 day CAD to MCNP conversion
 - ◆ 1 day data visualization in Excel.
 - ◆ 1 day photon detectors
 - ◆ 2 days variance reduction
- ◆ Custom training materials can be developed for specific onsite requirements.
- ◆ Onsite Consulting available.



Onsite custom class at LANL, Sept. 2008

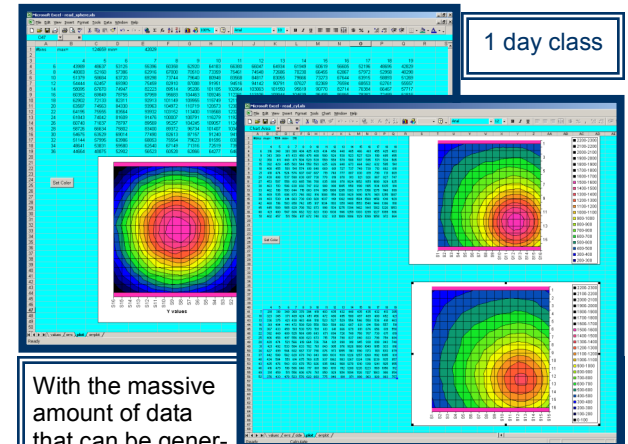
Cost:

Cost is \$400 per day in the US and \$600 per day anywhere else. There is a three student minimum.

The minimum cost (paid on month before the start of the class) for a week long class in your location is :

$\$400 \times 3 \text{ students} \times 5 \text{ days} = \$6,000 \text{ (US)}$
 $\$600 \times 3 \text{ students} \times 5 \text{ days} = \$9,000 \text{ (outside US)}$
 Fees must be paid in US dollars prior to the start of the class. Late fees apply. For a week long course, a \$300 late fee (per participant) is added if payment is not received 1 month before start. An additional \$200 late fee (per participant) is added if payment is after the class starts.

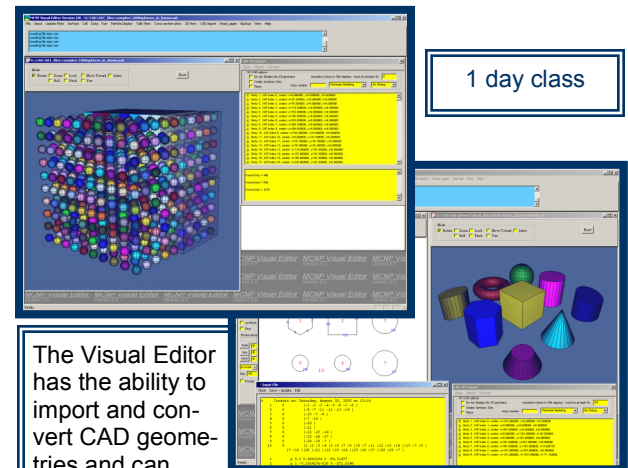
MCNP/MCNPX Output Visualization



1 day class

With the massive amount of data that can be generated by MCNP/MCNPX, it is essential that methods be developed to visualize this data. Visual Editor Consultants has developed a process for reading MCNP/MCNPX mctal data files and creating contour plots from the data. This technique can be used to also create animations.

CAD to MCNP/MCNPX Conversion



1 day class

The Visual Editor has the ability to import and convert CAD geometries and can generate a 3D display of existing MCNP/MCNPX geometries. Ray traced images can be made as solids, radiographic, or transparent. The Dynamic view allows the user to change the transparency of cells and move the object in real-time.