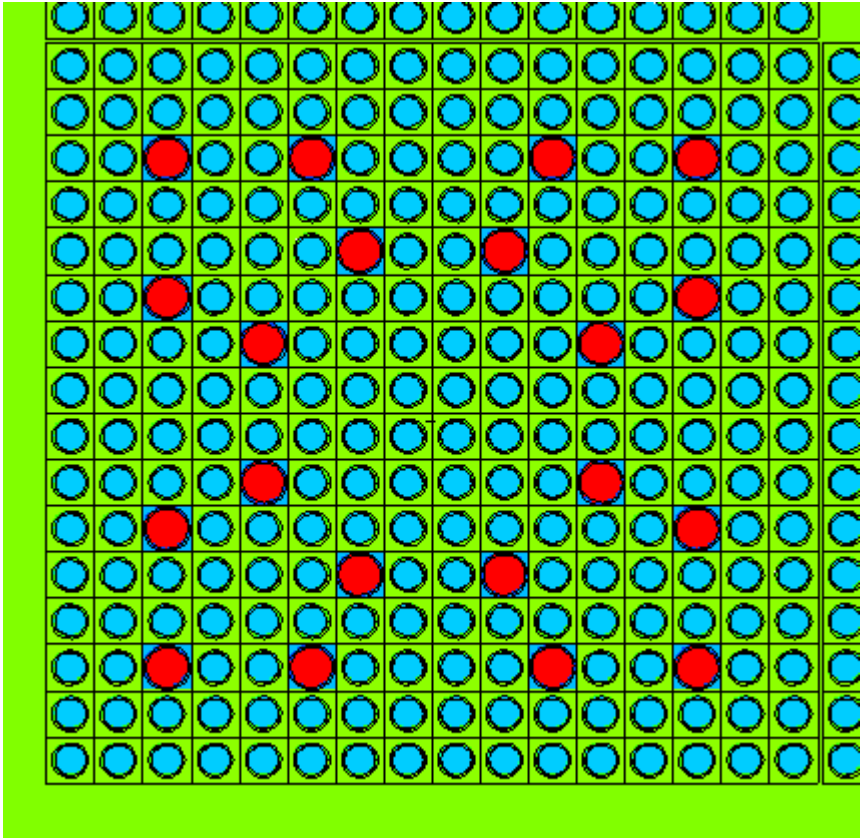




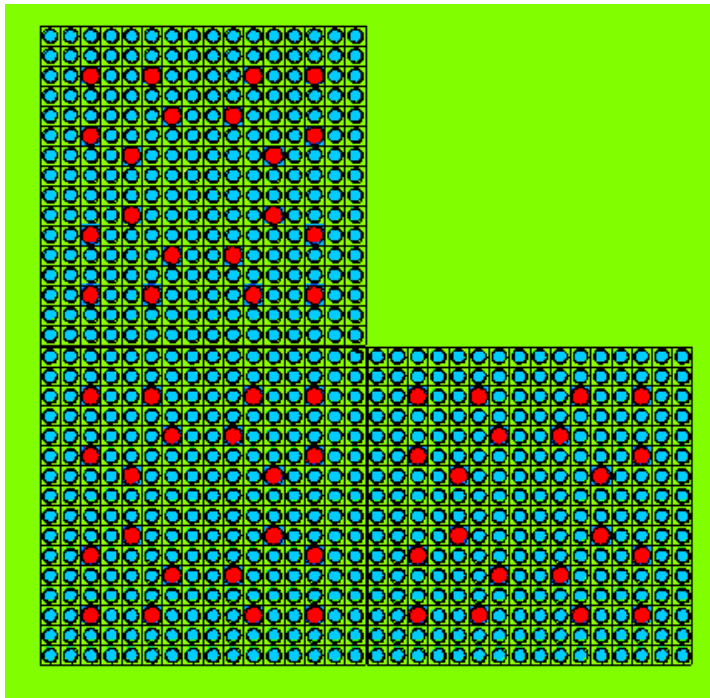
Helmut Glöde

TUEV NORD SysTec GmbH & Co. KG

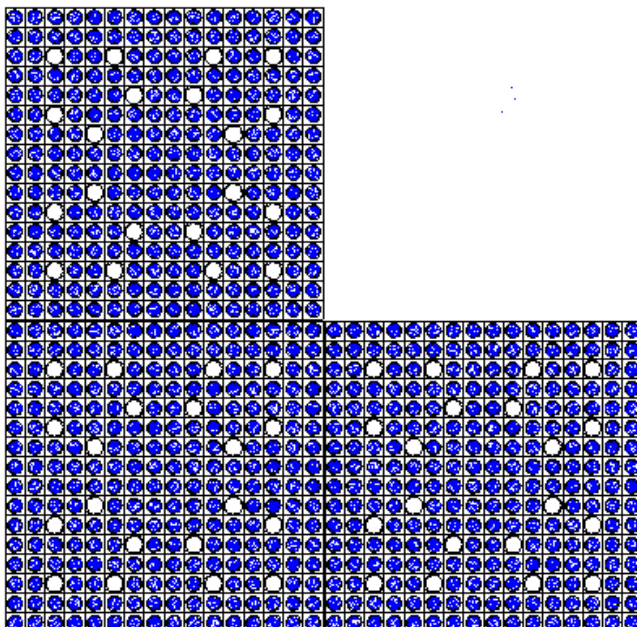
Close up of a fuel assembly



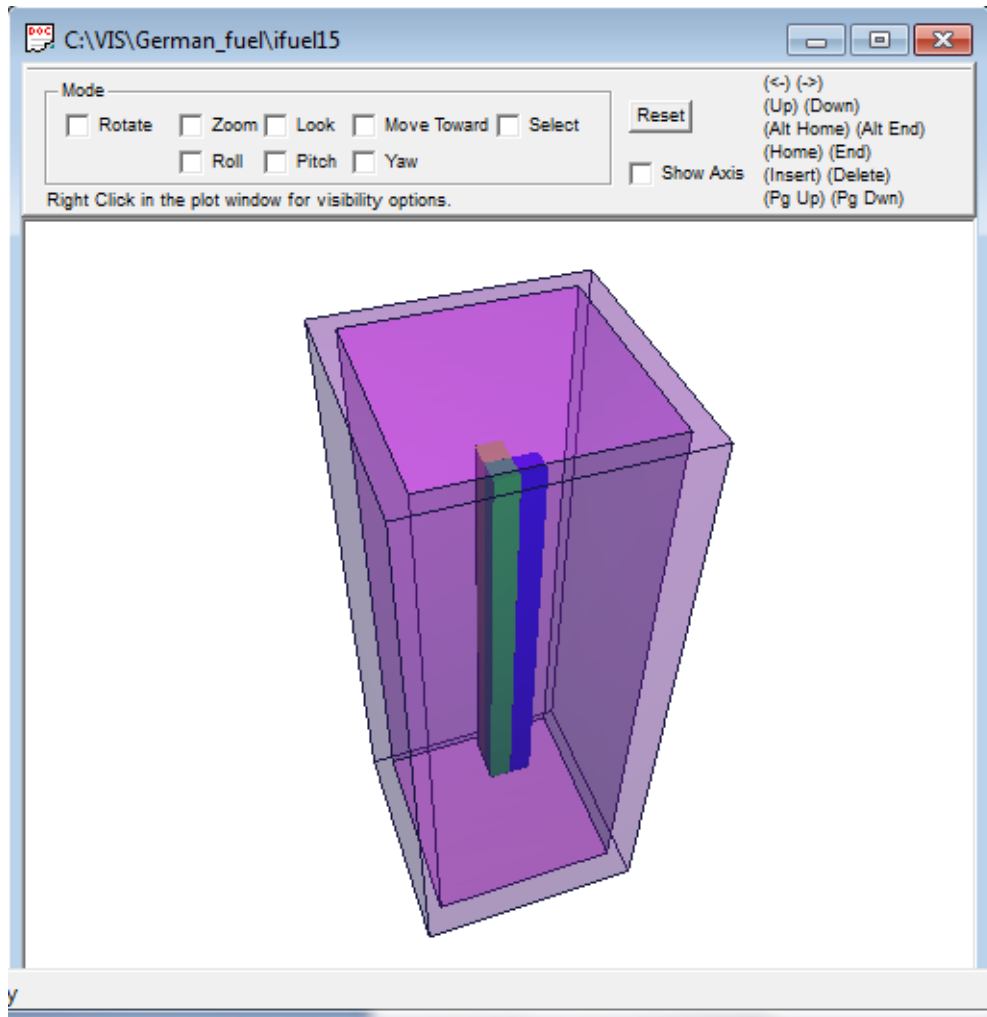
Three fuel assemblies:



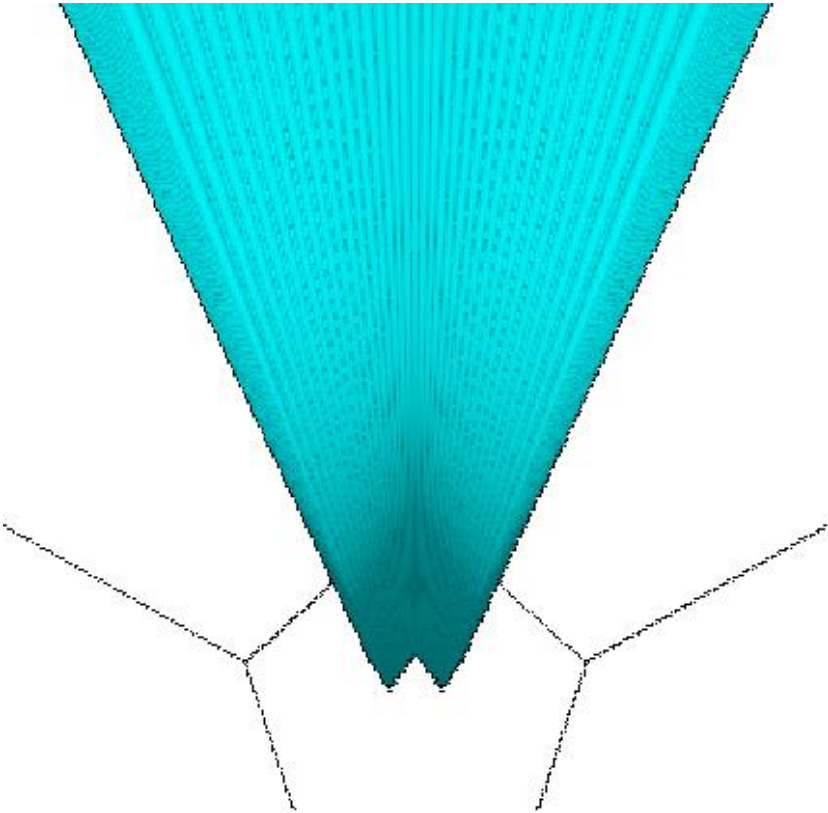
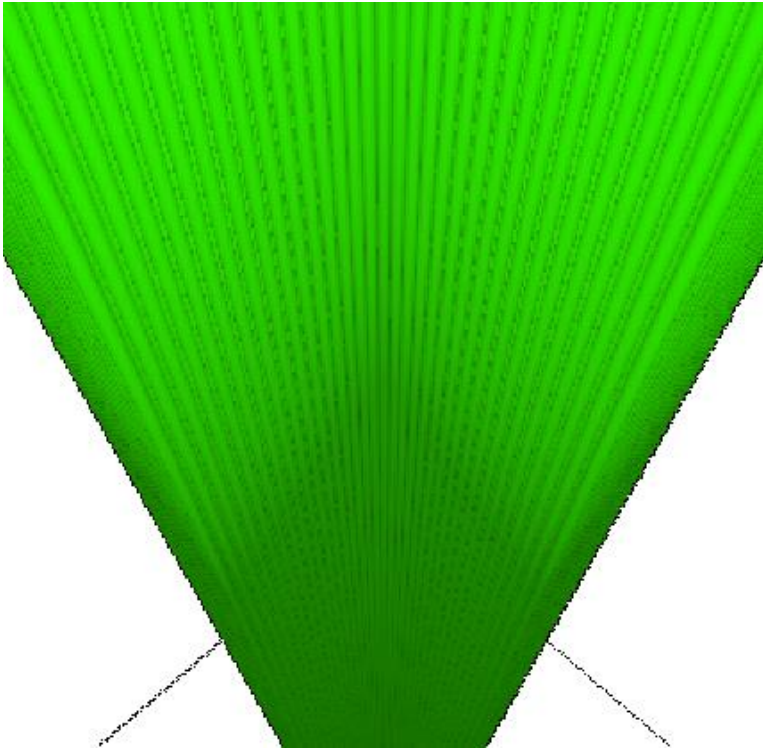
Source points in three fuel assemblies:

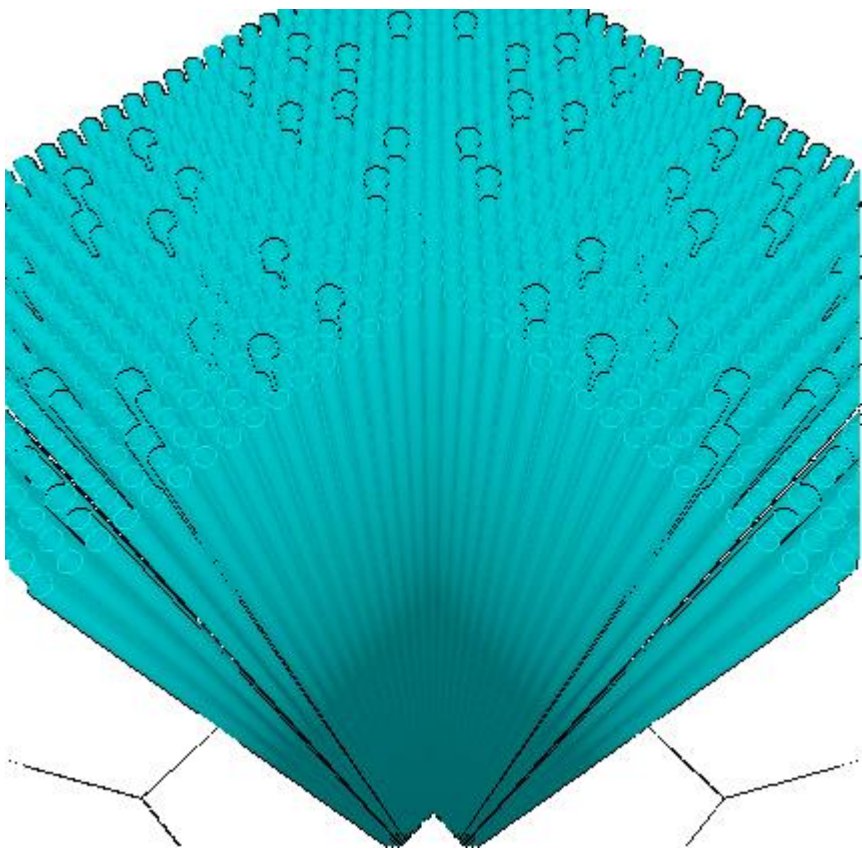
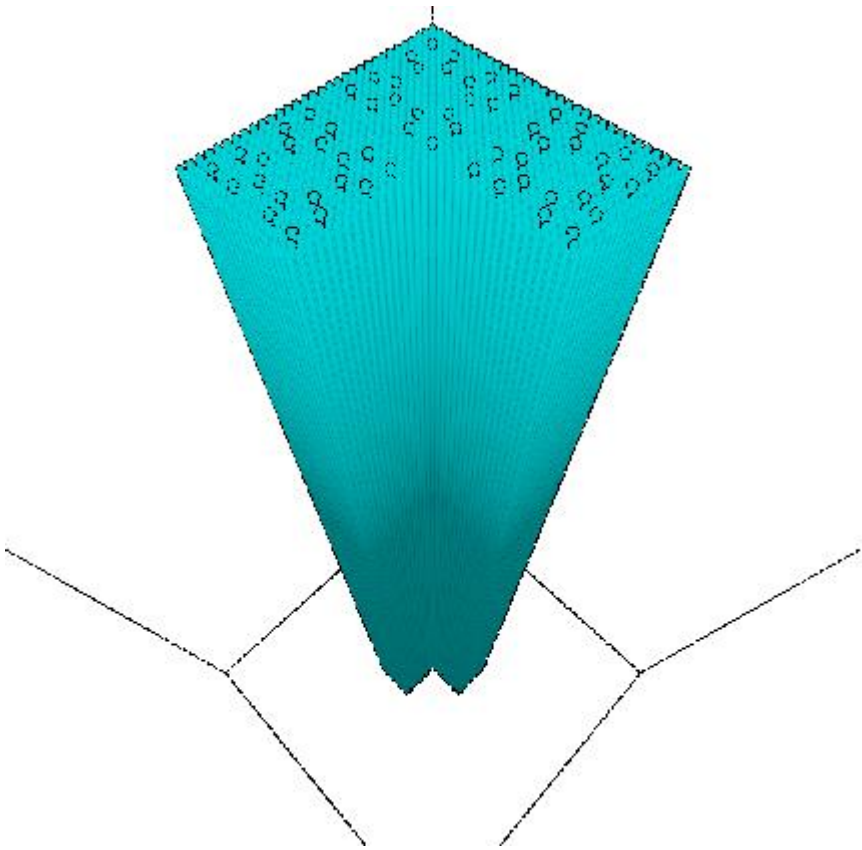


3D ray dynamic image

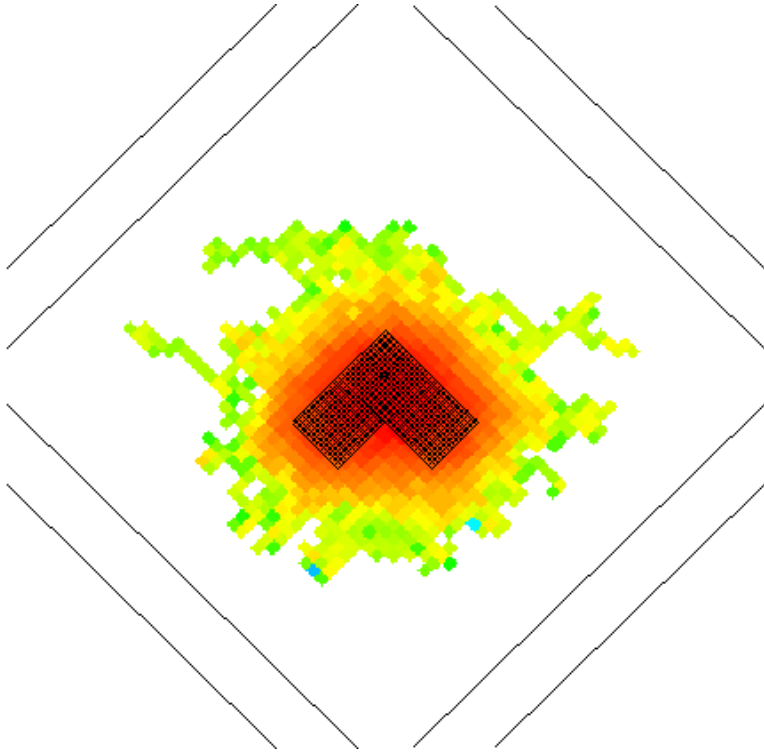


3D ray traced Images

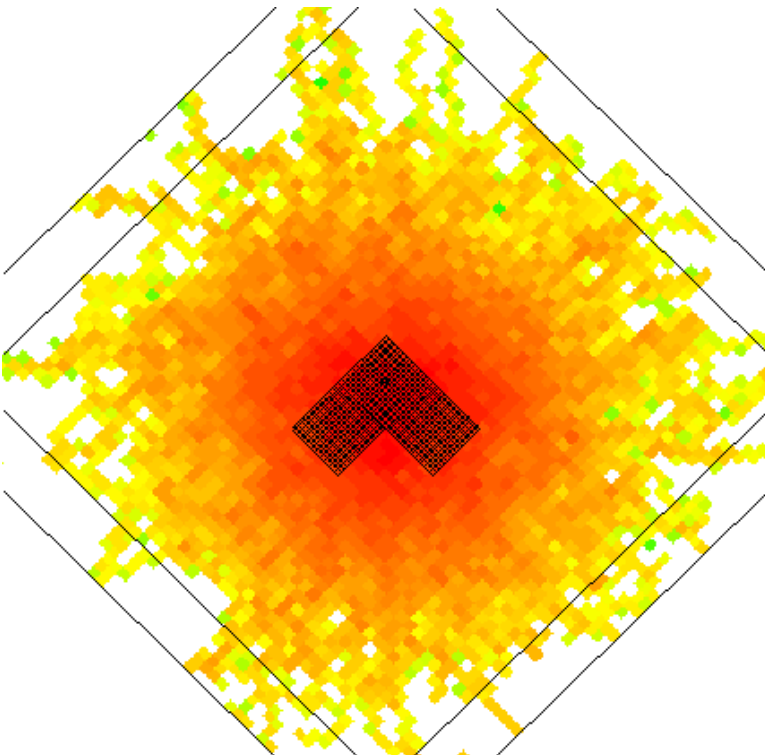




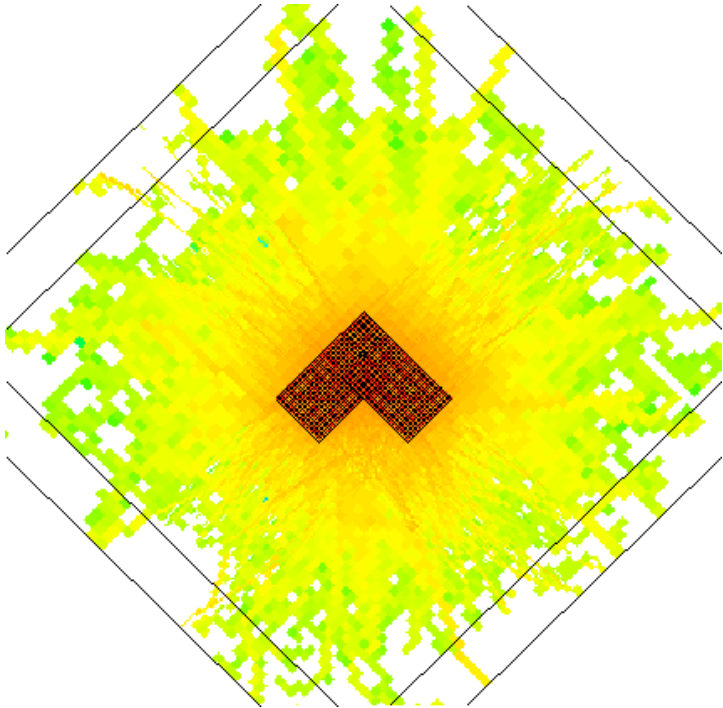
Neutron flux mesh tally



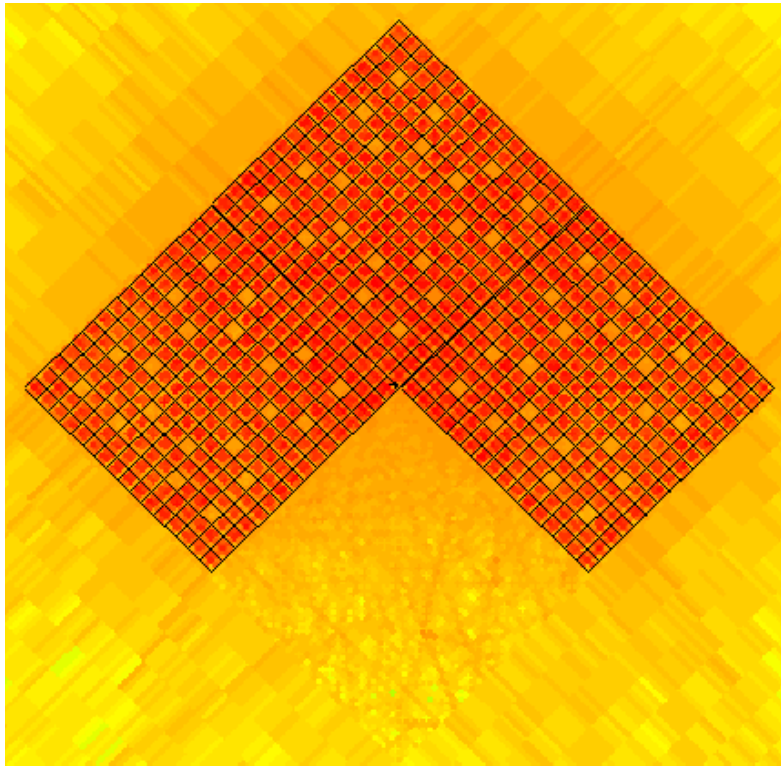
Gamma flux mesh tally



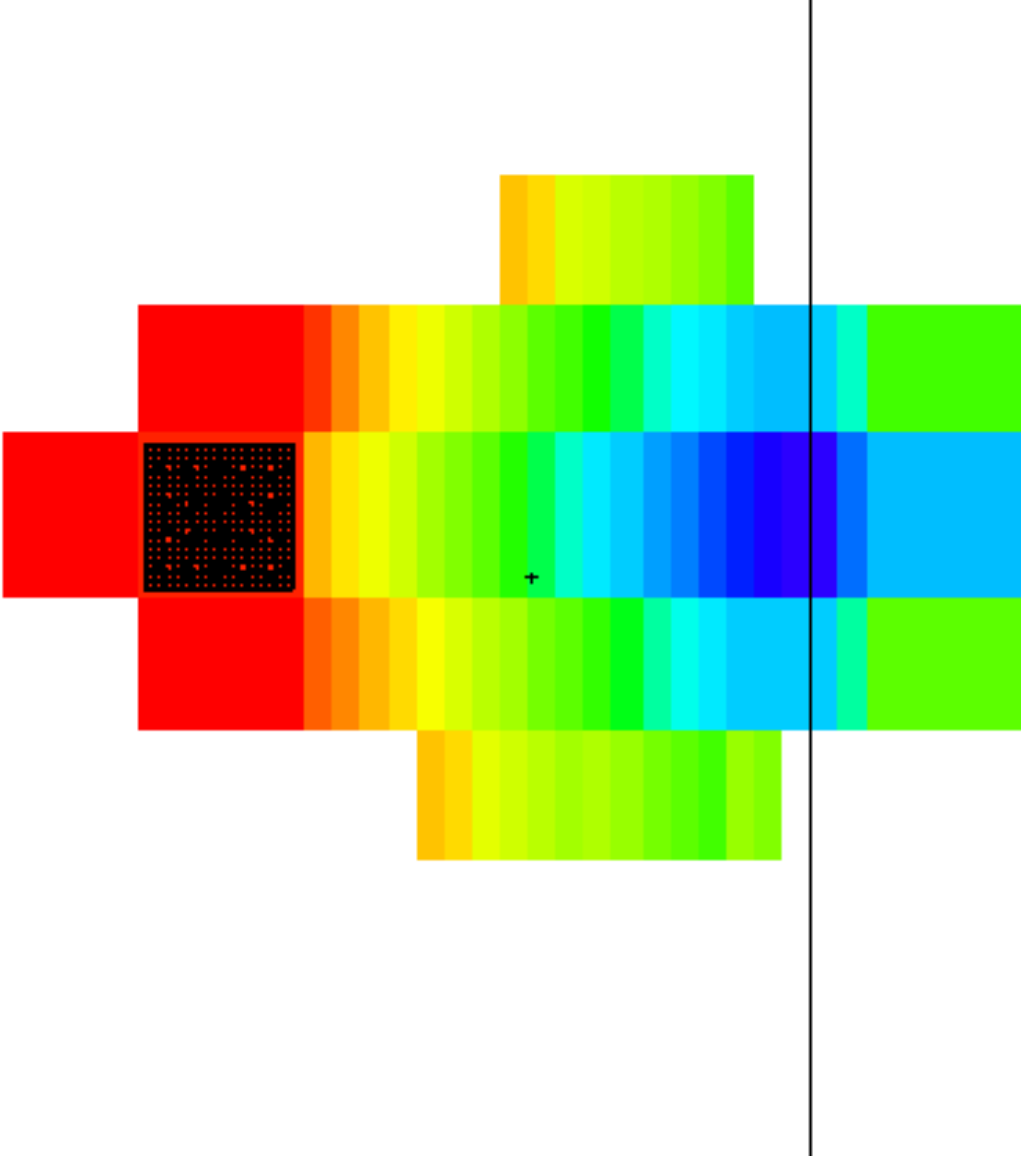
Energy Deposition mesh tally



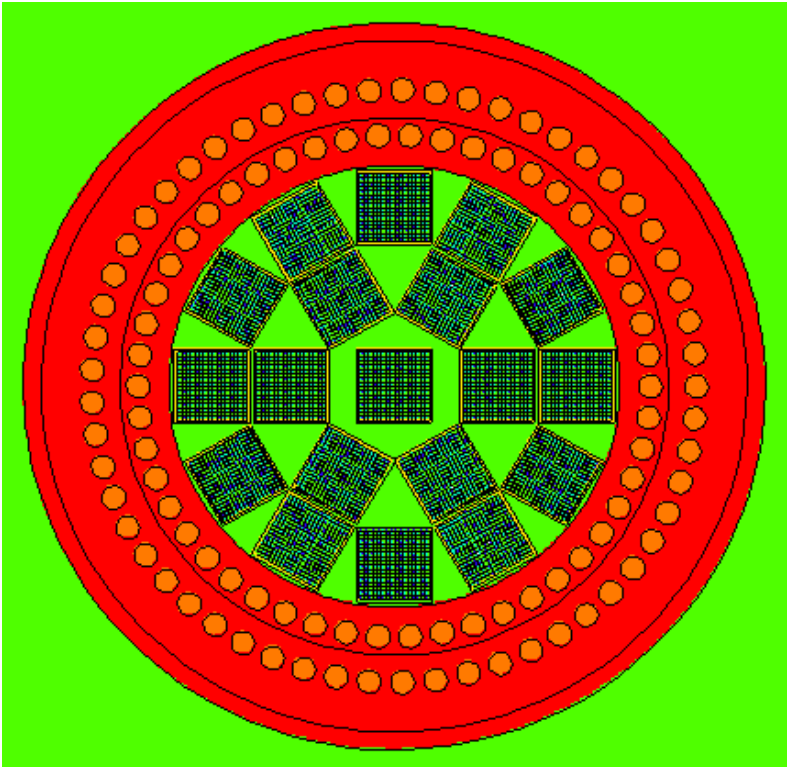
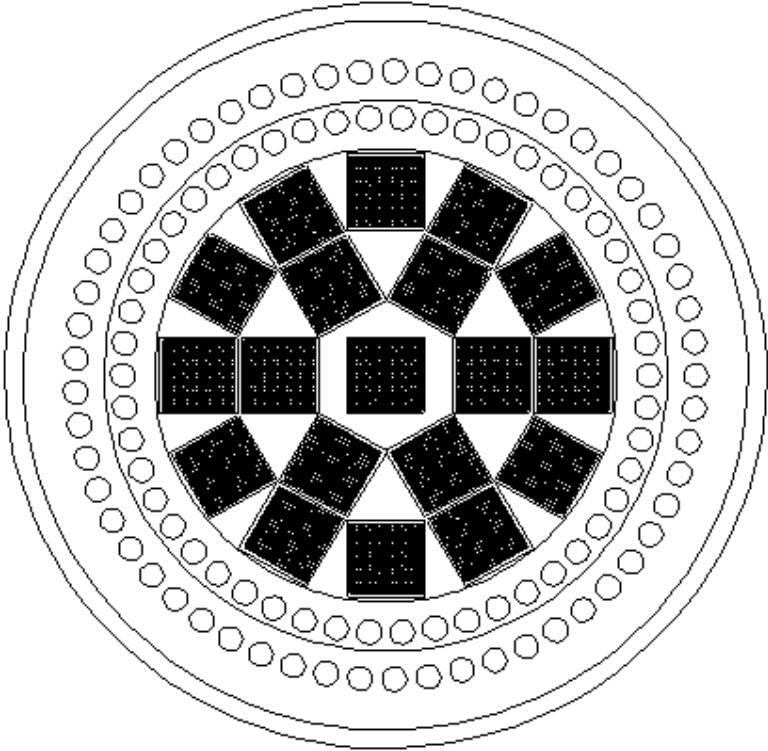
Close up of the energy deposition mesh tally



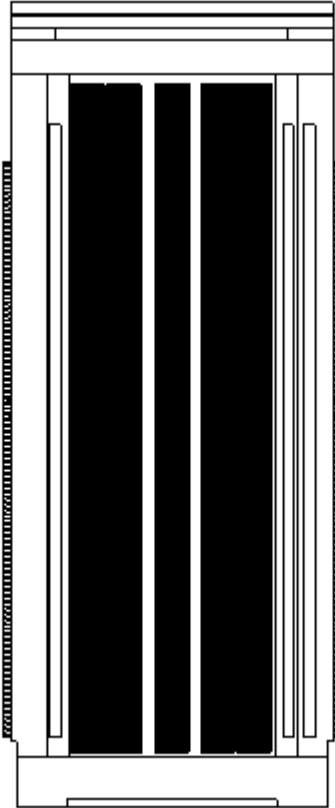
Weight window mesh through shield wall



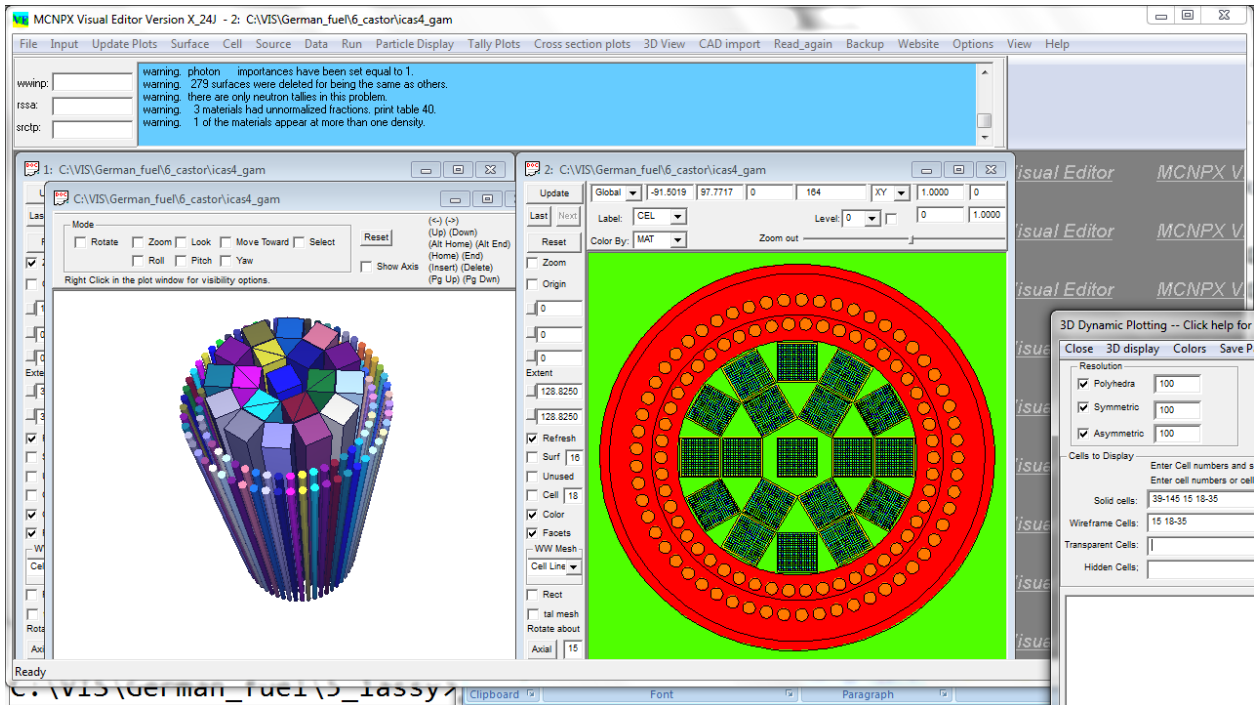
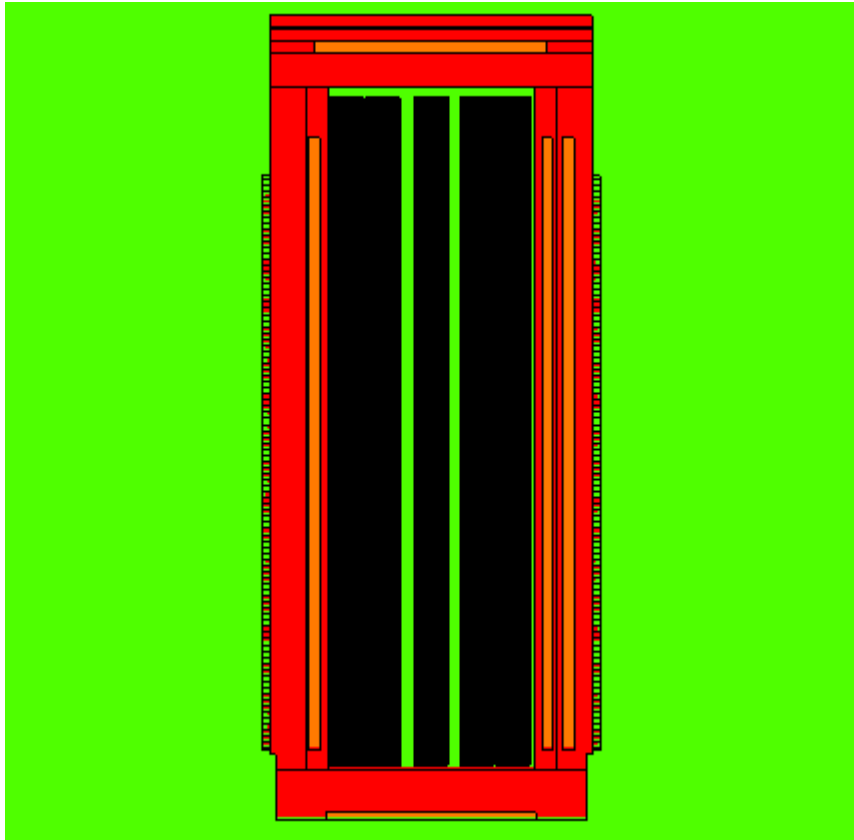
Castor cask model created in 1 day



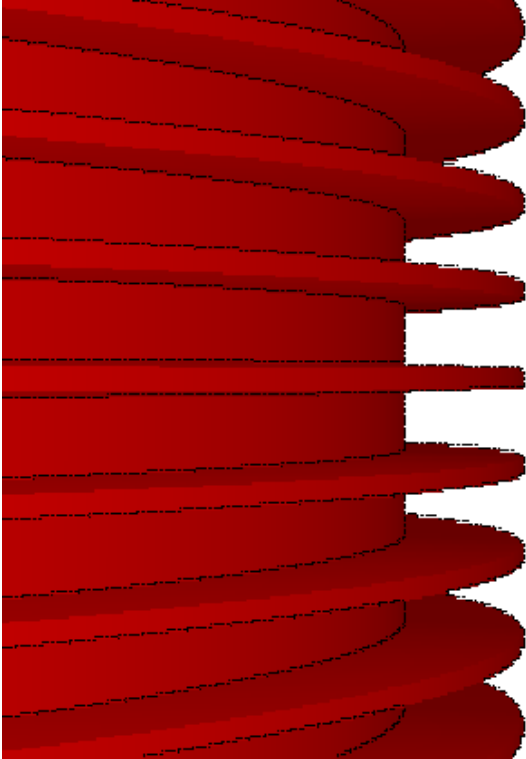
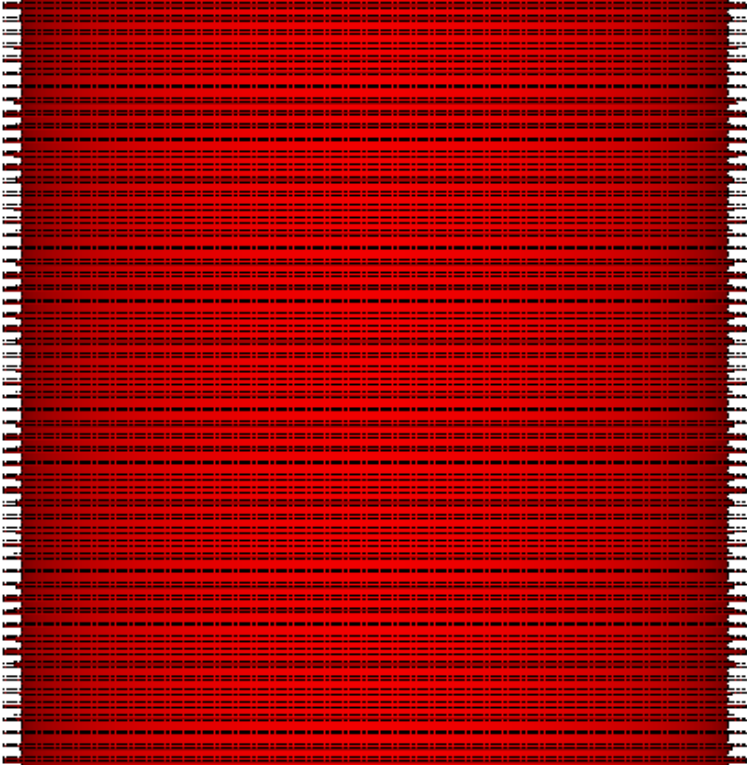
Axial view of the castor cask



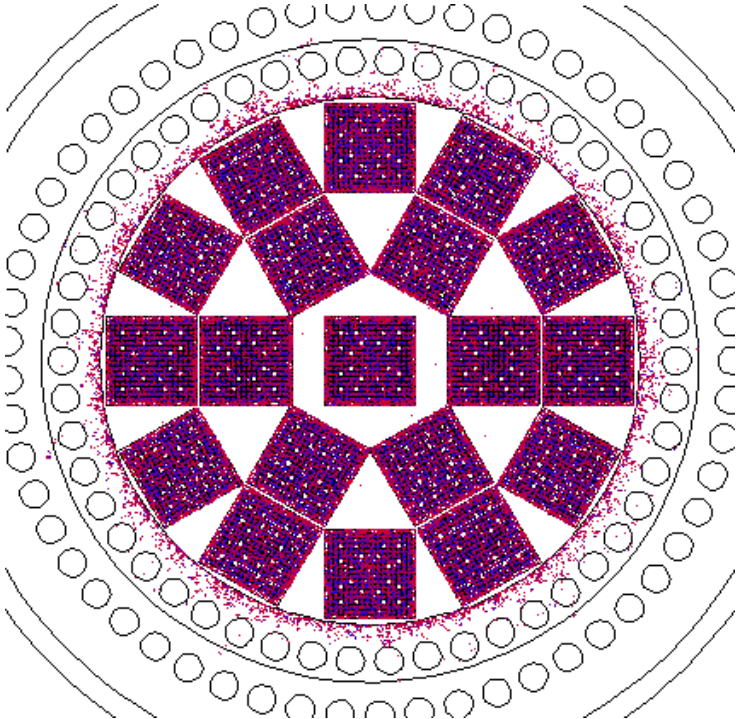
Castor cask geometry



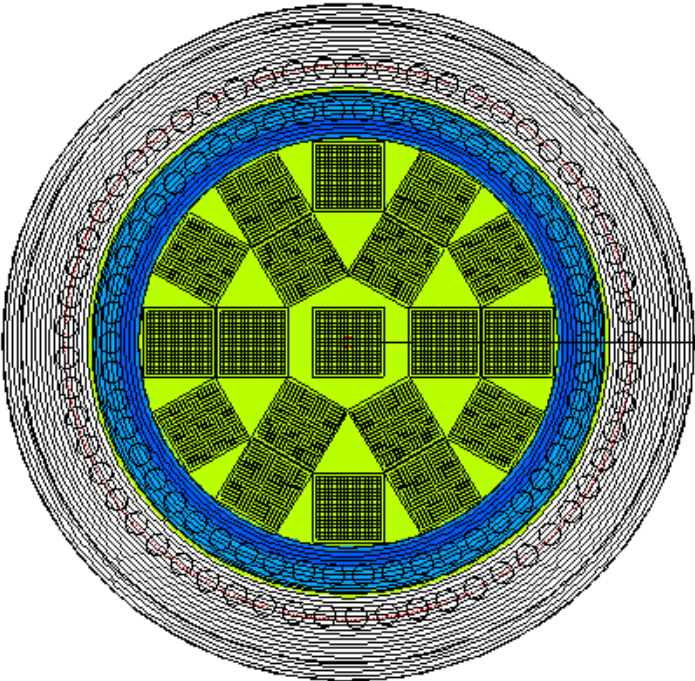
Close up view of the castor cask fins



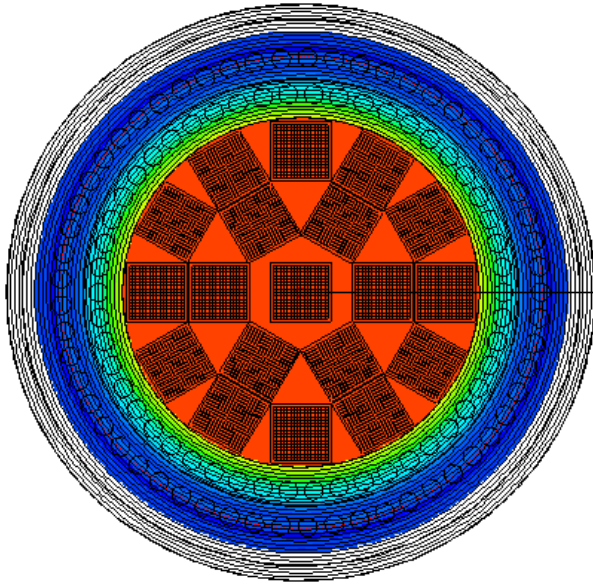
Particle tracks in the castor cask



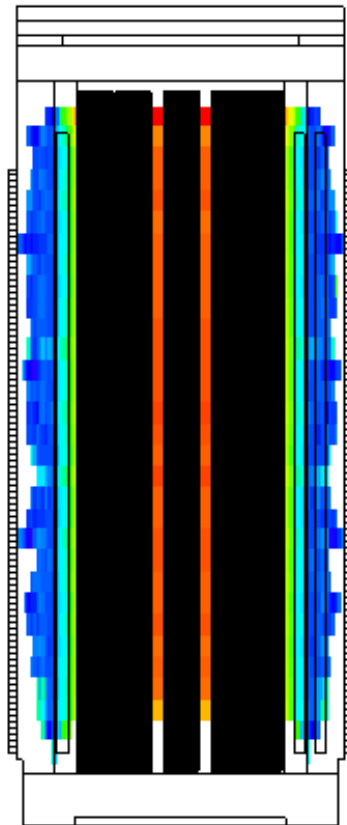
Weight window mesh in the castor cask



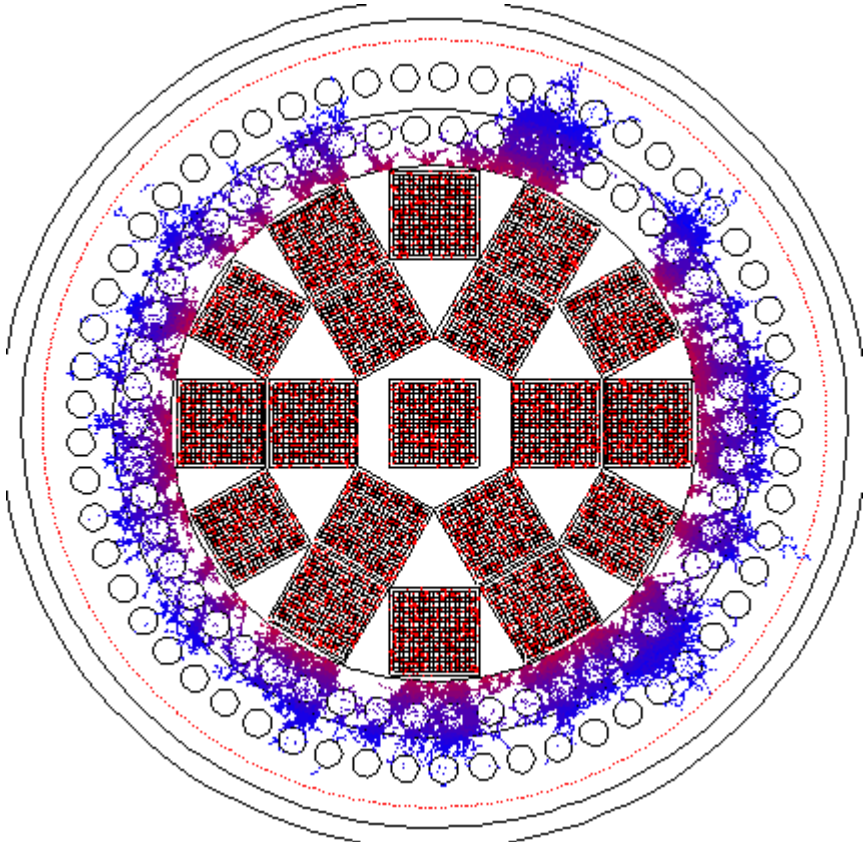
Weight windows for the castor cask



Axial view of the weight window mesh



Particle tracks in the castor cask through the weight window mesh



Final weight window mesh and tracks

