

1.0 Example – SDEF Source Plotting

This example will display the source starting point in a sphere of Uranium 235.

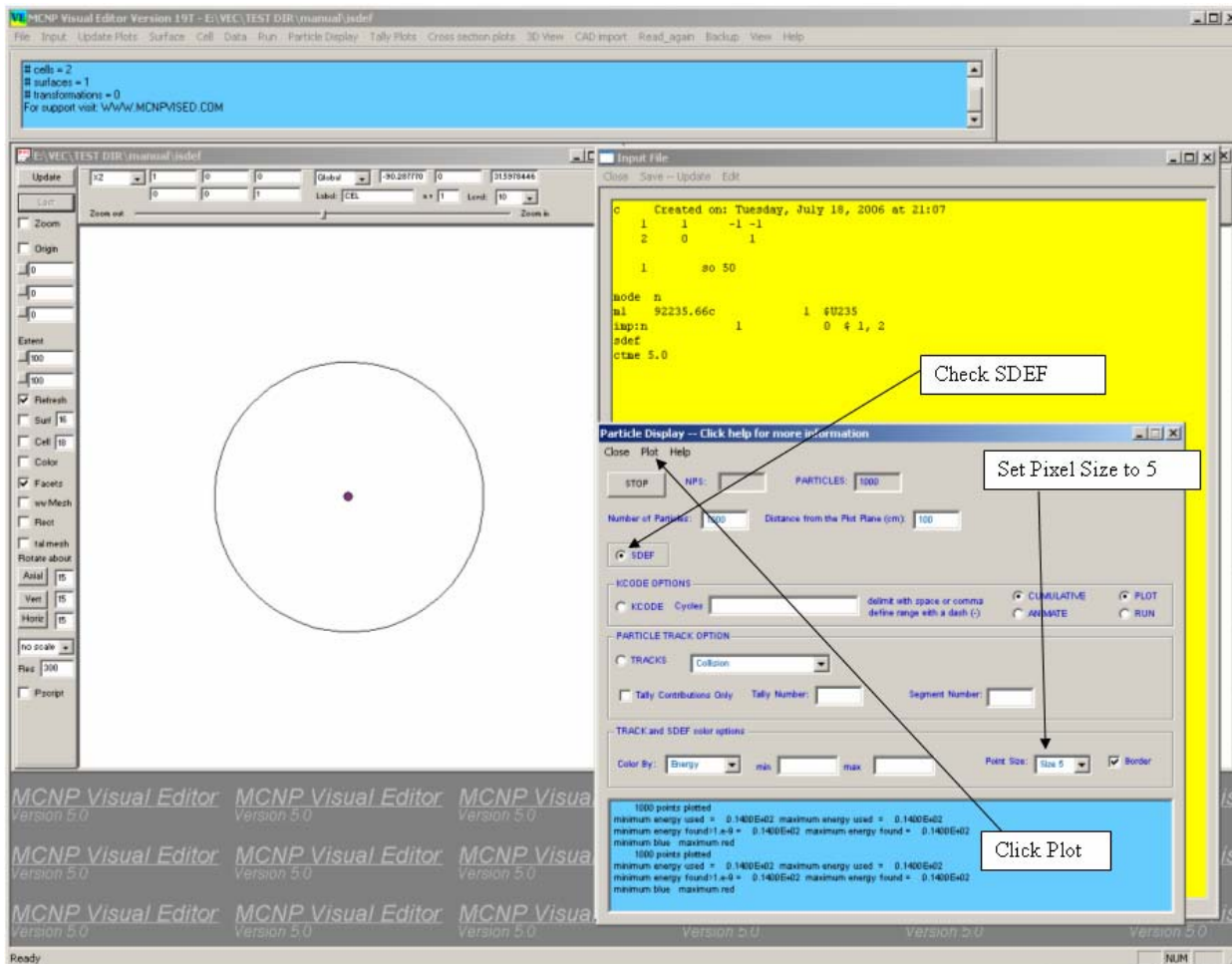


Figure 1-1 SDEF Plot of U235 Sphere.

Start the Visual Editor.

Click on File...Open and load the *isdef* input file.

Click on Update Plots.

Click on Particle Display.

On the Particle Display Panel, Click on SDEF if it is not already selected (SDEF is the default).

Because this plot will simply show the starting point of this source energy based at the origin, the result will be a single dot displayed at the origin. To make the dot more visible, adjust the size of the pixel.

Set the Pixel Size to Size 5.

Click on Plot. A blue dot will appear at the origin of the sphere on the active window.