

1.0 Example: KCODE Source Plotting

In this example, a KCODE source plot will be created for a sphere of U235.

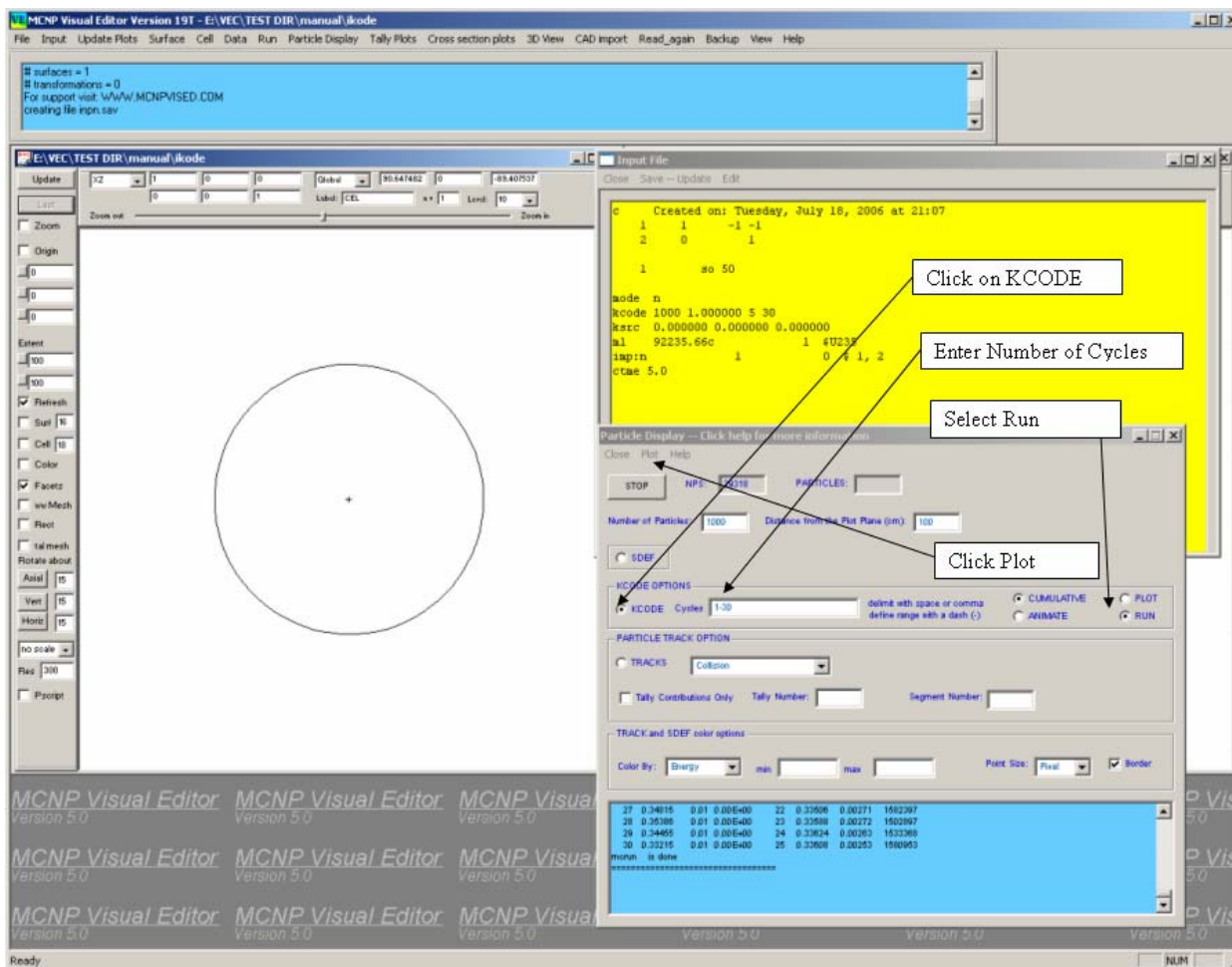


Figure 1-1 Run KCODE

Start the Visual Editor.

Click on **File...Open** and open the file *ikode*.

Click on **Update Plots**.

Click on **Particle Display** on the Main Menu.

As shown in *Figure 1-1*:

Click on **KCODE** to select a KCODE plot.

Type **1-30** in the **Cycles** box to specify how many cycles to run.

Click the **Run** option to the right of the cycles box.

Click **Plot** on the Particle Track Plotting Menu. This will run the input file in MCNP.

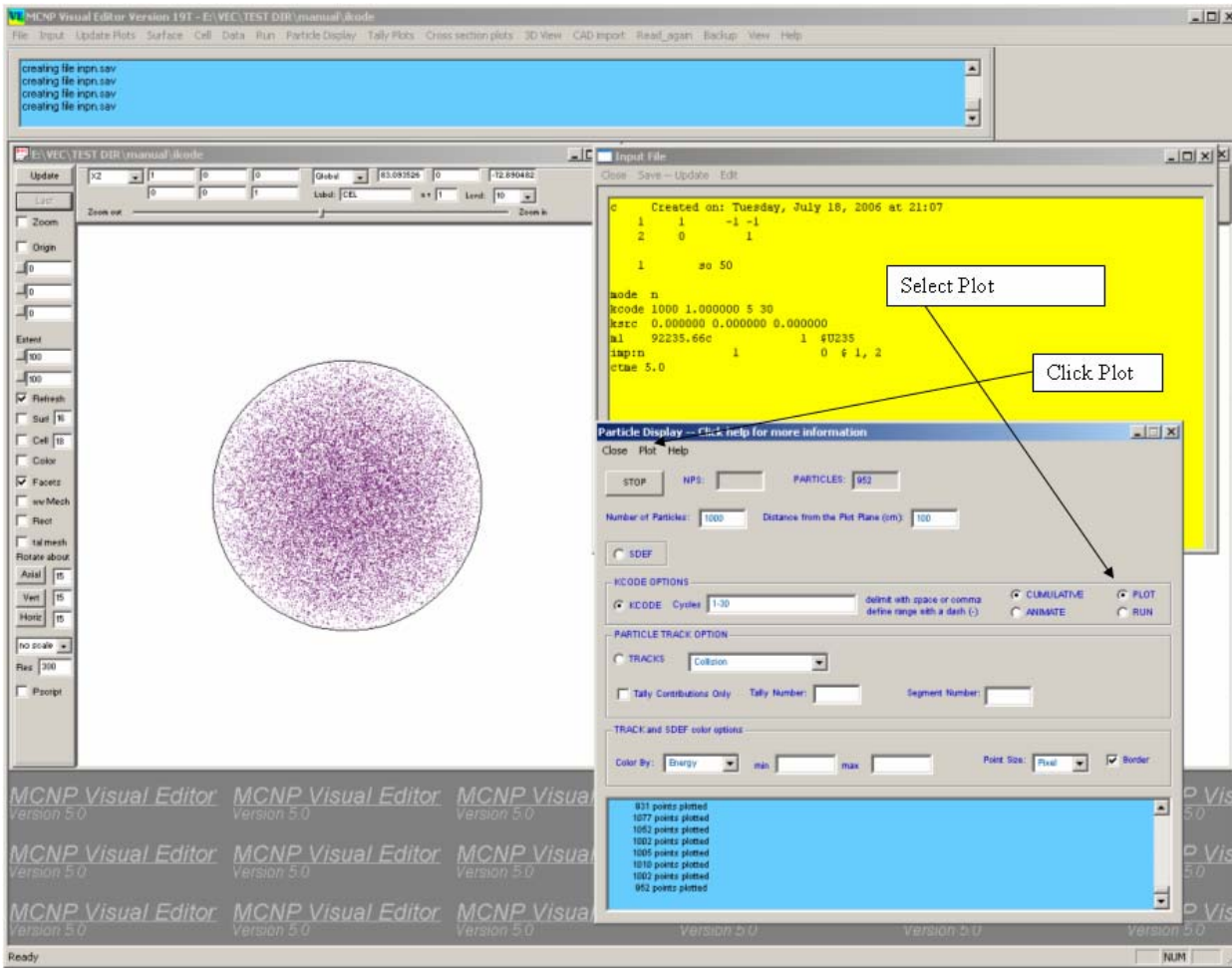


Figure 1-2 Plot KCODE Source

As shown in *Figure 1-2*:

Select Plot to the right of the KCODE Cycles box.

Click Plot on the **Particle Display Panel Menu**.

The sphere shown in the left plot window of *Figure 1-2* is a cumulative plot. An animation may be plotted by selecting **Animation** and clicking **Plot**.