

1.0 Example: Cross Section Plotting

This example will produce a cross section plot of a sphere containing U235.

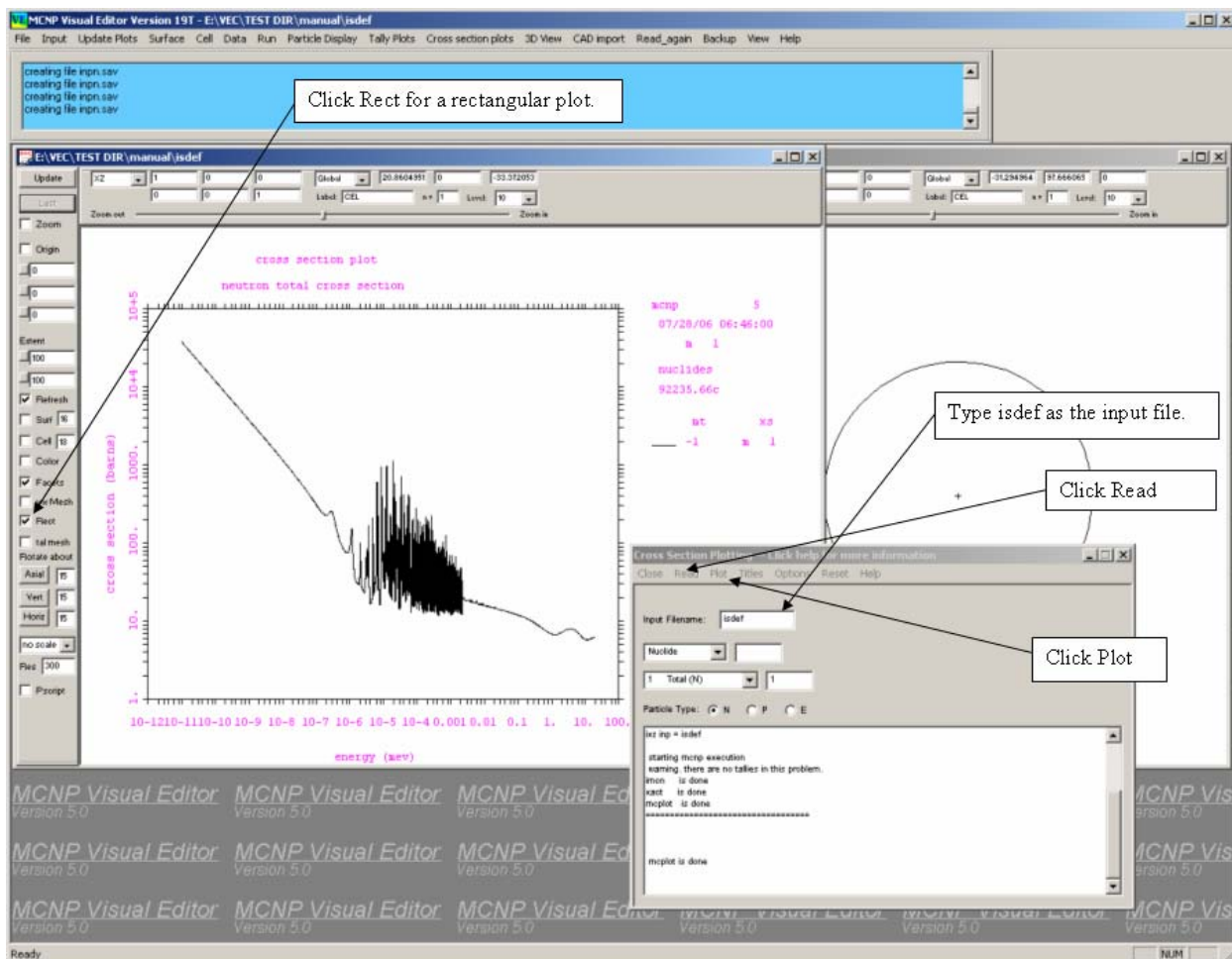


Figure 1-1 Creating a Cross Section Plot

Start the Visual Editor.

Click **File...Open** and select the **isdef** input file.

Click **Update Plots**.

Click the **Rect** box to create a rectangular plot.

Click on **Cross Section Plots** to open the Cross Section Plotting Panel.

Type **isdef** in the Input Filename box.

Click **Read** to load the file.

Click **Plot** to display the plot.