

1.0 Example: Cell Sense Illustration

This example shows the creation of an L shaped cell. The material Lead is added to the cell to allow it to be plotted in color.

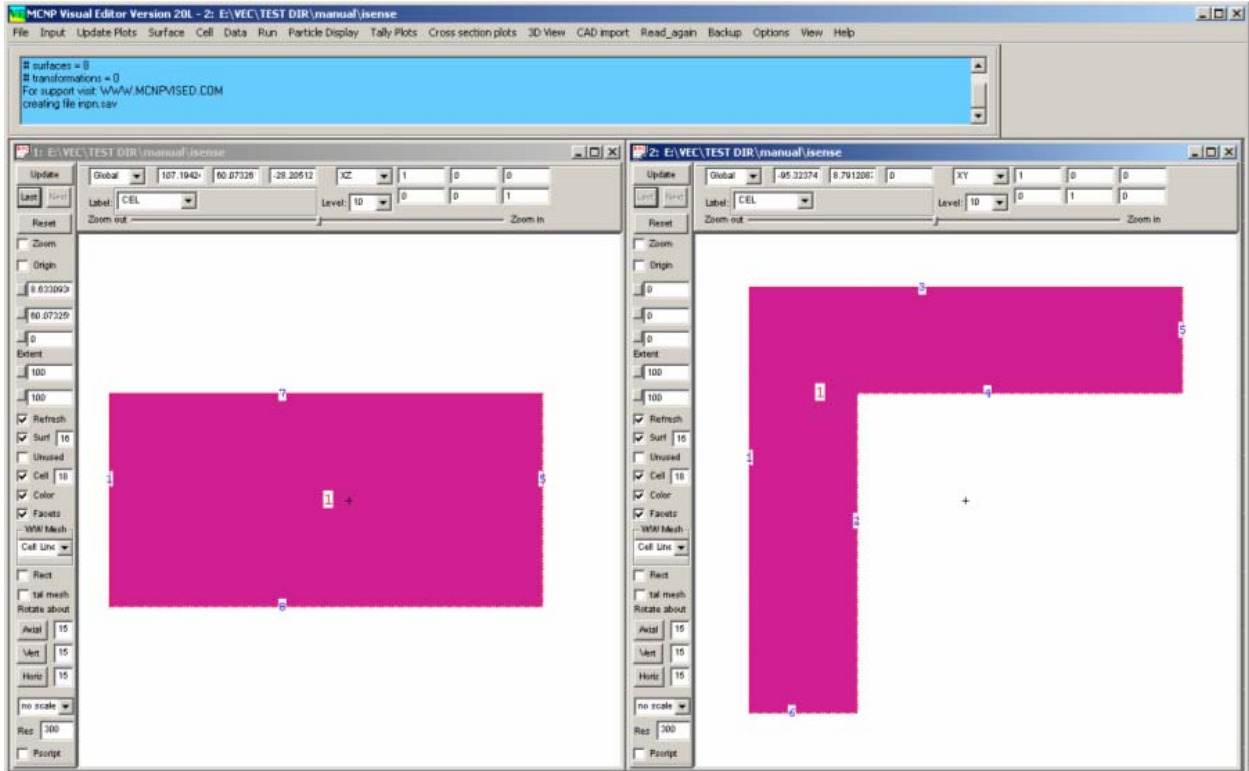


Figure 1-1 An L shaped cell.

Start the Visual Editor.

On the Main Menu, **Click on File...Open...** and open the *isense* file.

The input file is as follows:

c Created on: Monday, June 26, 2006 at 09:26

```
1 px -80
2 px -40
3 py 80
4 py 40
5 px 80
6 py -80
7 pz 40
8 pz -40
```

mode N

```
m252 82206.60c -0.242902 $lead
      82207.60c -0.223827 82208.60c -0.53327
```

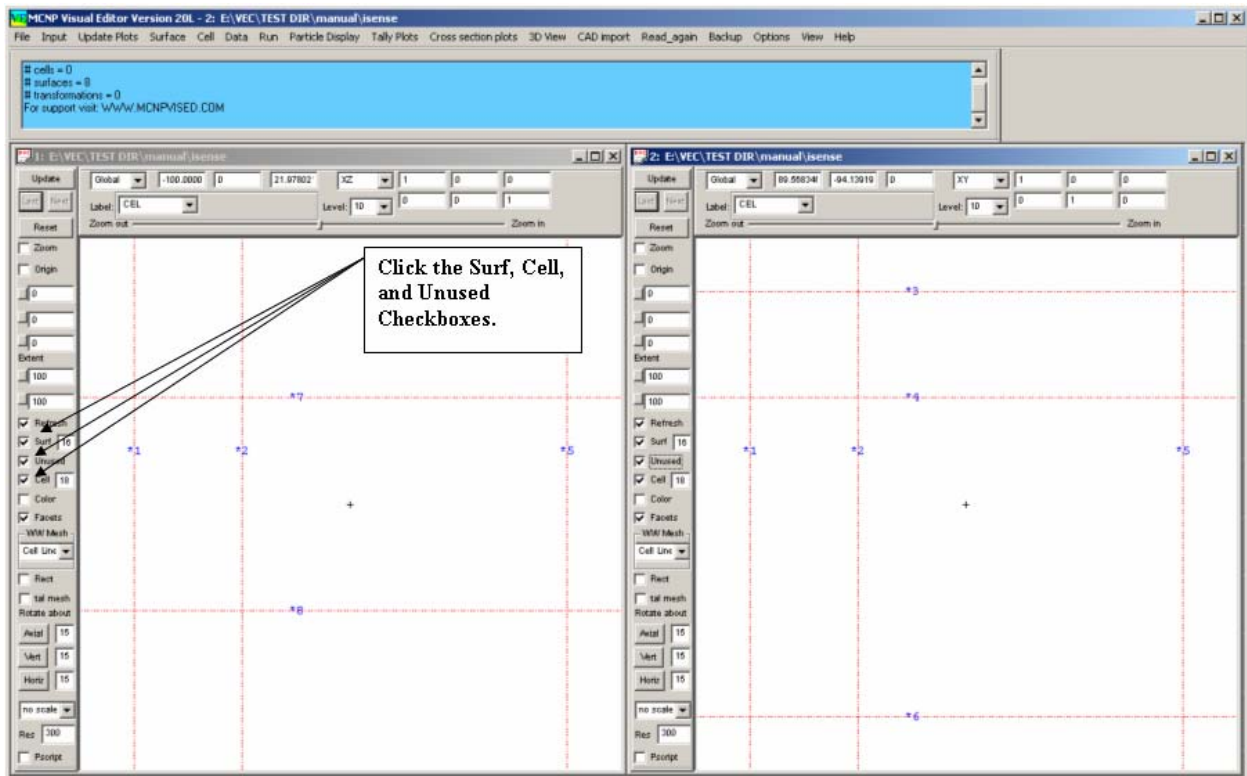


Figure 1-2 Surf, Cell, and Unused checkboxes.

On both the left and right plot windows, **Click on the Surf, Cell, and Unused** checkboxes.

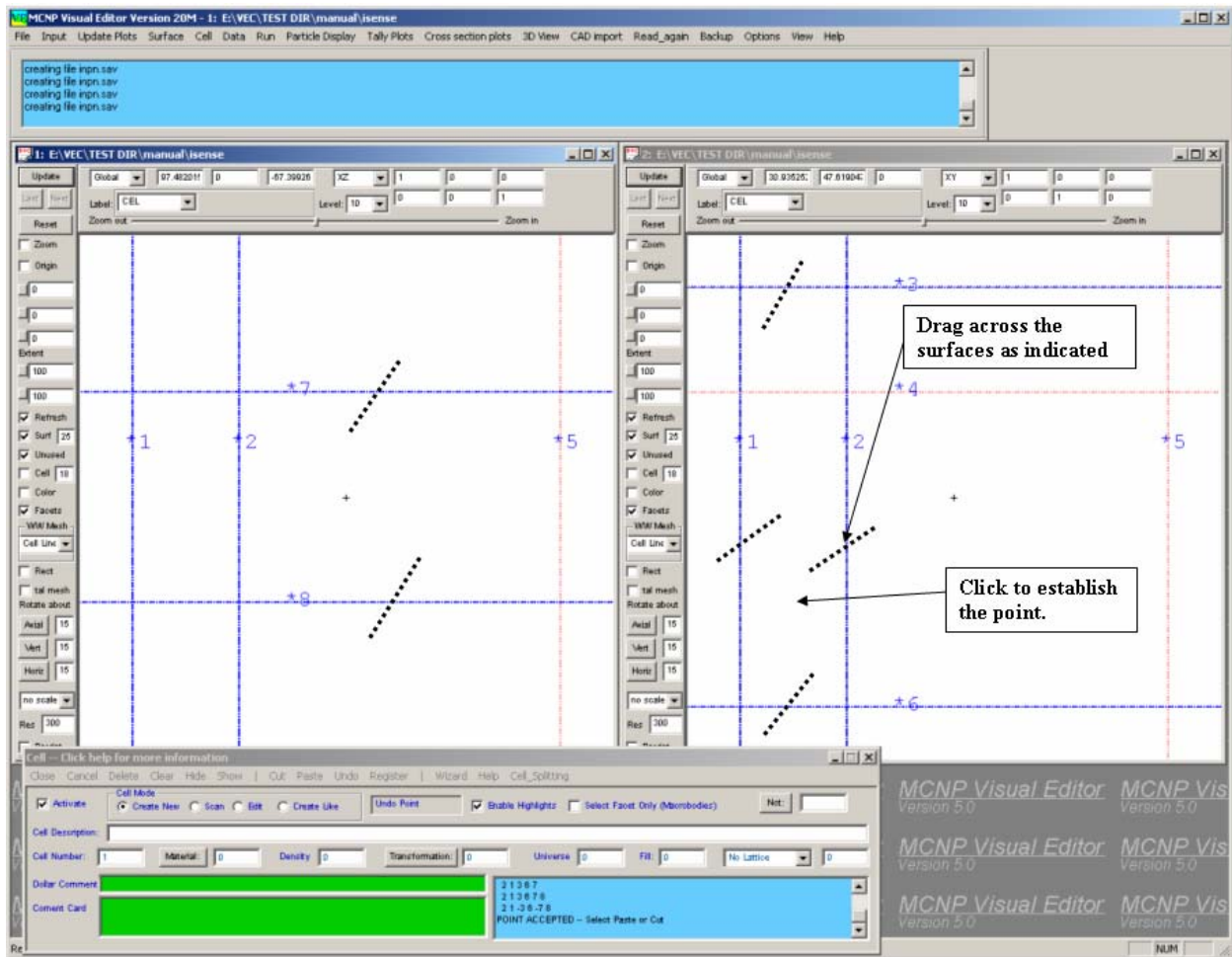


Figure 1-3 Creating the first paste.

On the Right Plot Window, **Drag** across cells 1, 2, 3, and 6.

On the Left Plot Window, **Drag** across cells 7 and 8.

On the Right Plot Window, **Click** where indicated in *Figure 1-3*.

On the cell panel, **Click Paste**.

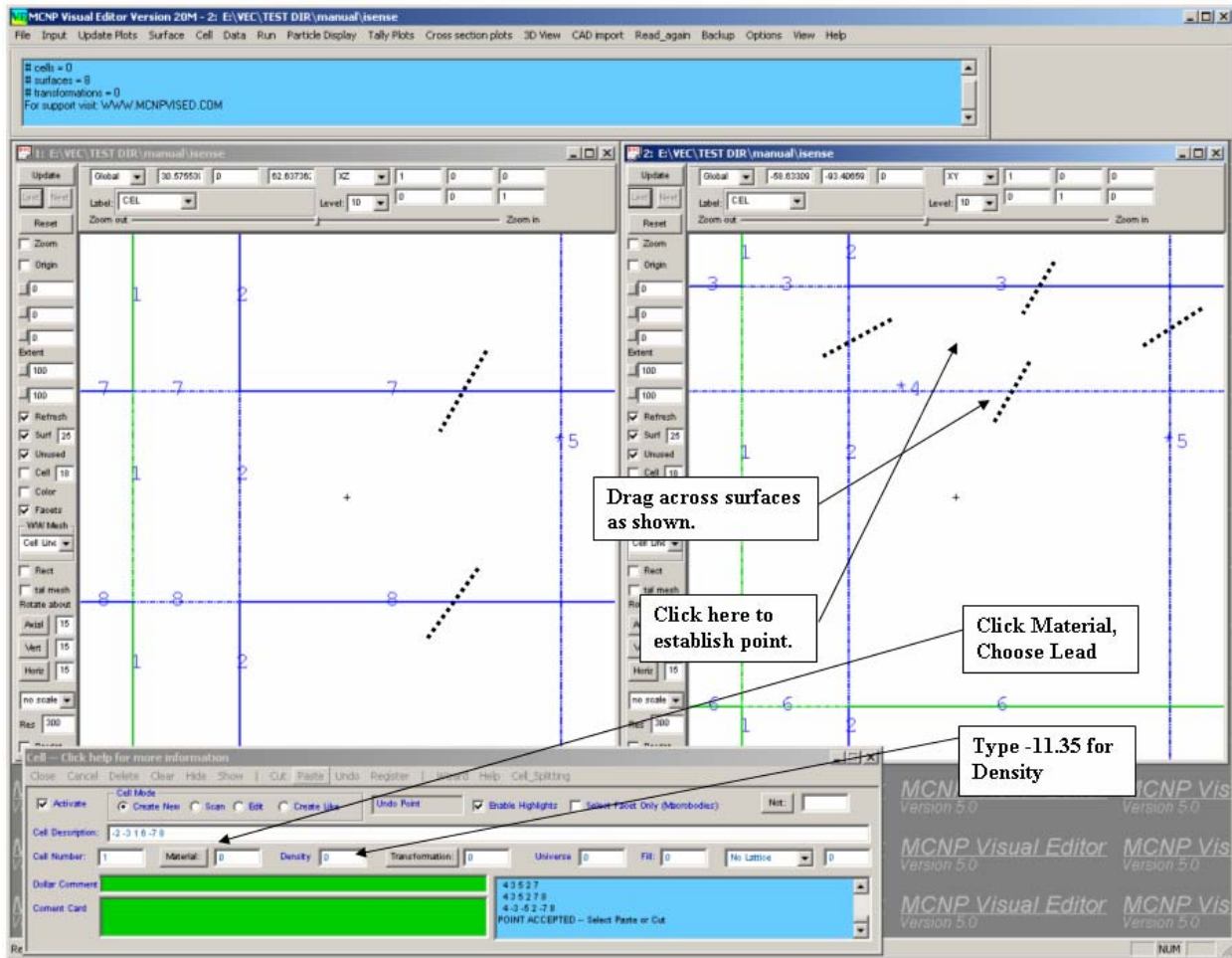


Figure 1-4 Creating the second paste.

On the Right Plot Window, **drag across surfaces 2, 3, 4, and 5.**

On the Left Plot Window, **drag across surfaces 7 and 8.**

On the Right Plot Window, **click where indicated in Figure 1-4** to establish the point.

On the Cell Panel, **Click Paste.**

On the Cell Panel, **Click Material** and **choose Lead.**

On the Cell Panel, **Enter a density of -11.35.**

On the Cell Panel, **Click Register.**

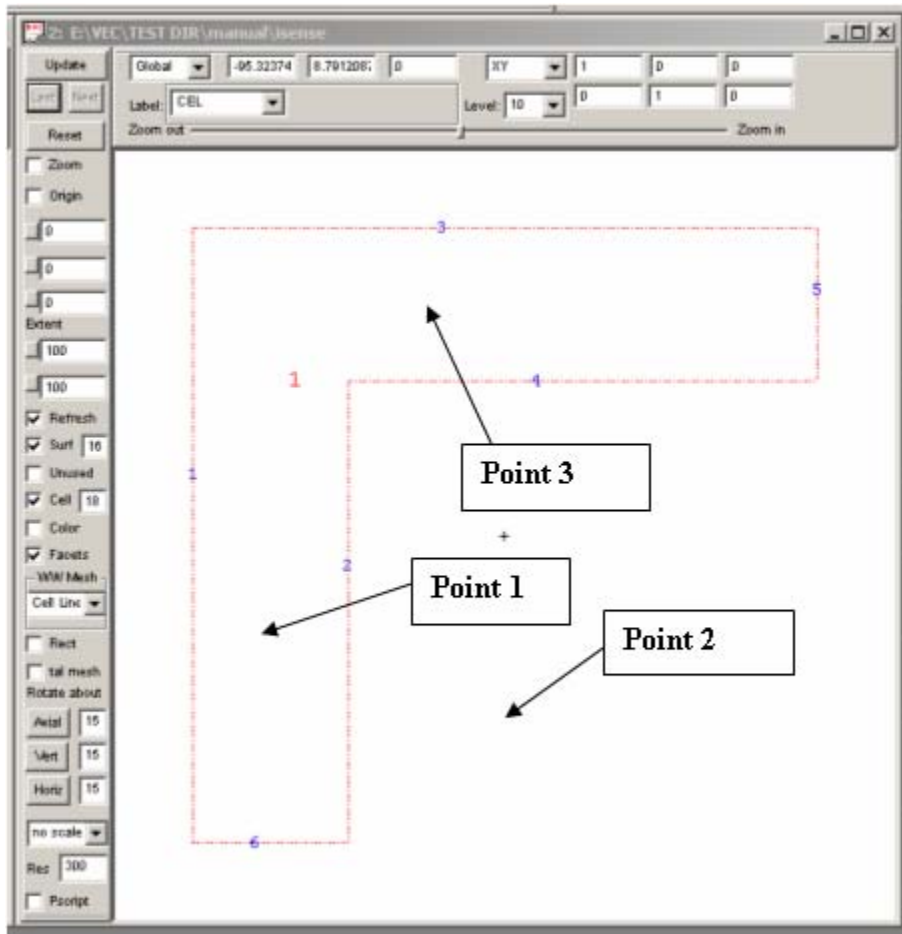


Figure 1-5 Justification for Using Two Paste Operations.

If the cell had been created in one operation by selecting all eight surfaces, a point does not exist that appropriately establishes the sense for all cases.

Point 1 incorrectly excludes the area right of surface 2 and above surface 4. This is wrong for the area that became the second paste in our example.

Point 2 incorrectly includes the area below surface 4 and to the right of surface 2.

Point 3 incorrectly excludes the area to the left of surface 2 and below surface 4. This is wrong for the area that became the first paste in our example.

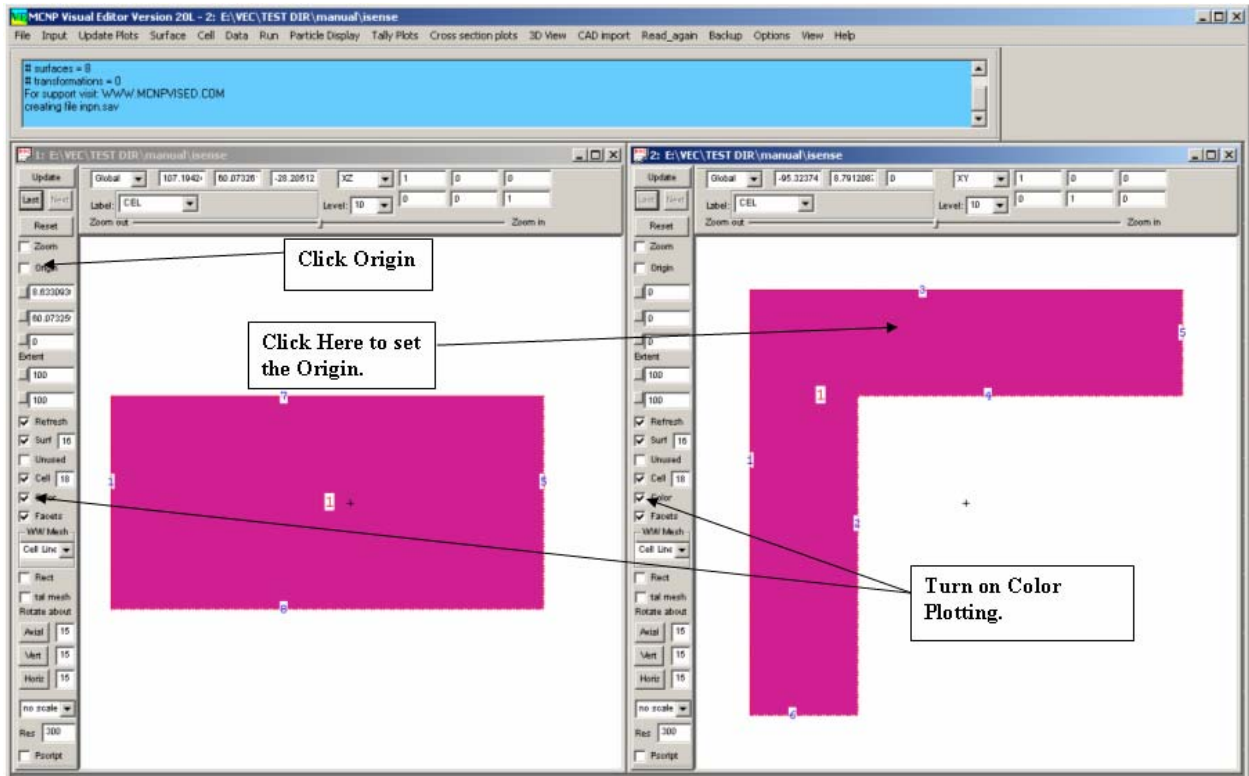


Figure 1-6 Final Display

Figure 1-6 shows the final display.